

52/175

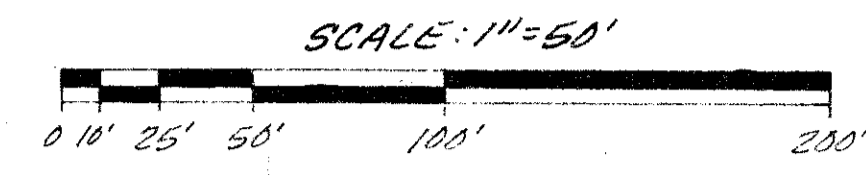
DRAWING NUMBER

DRAWING NUMBER

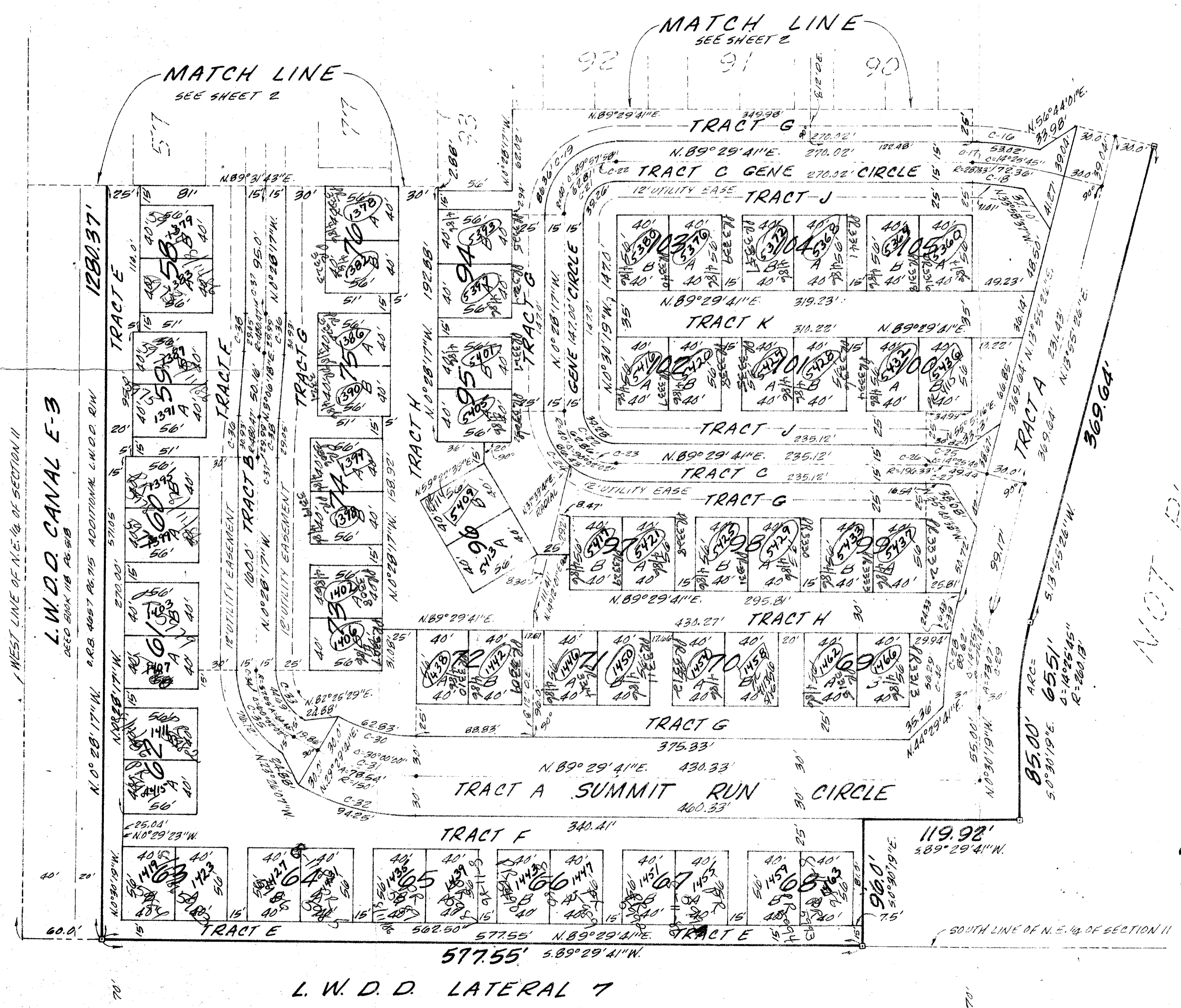
DRAWING NUMBER

PLAT OF SUMMIT PINES UNIT TWO

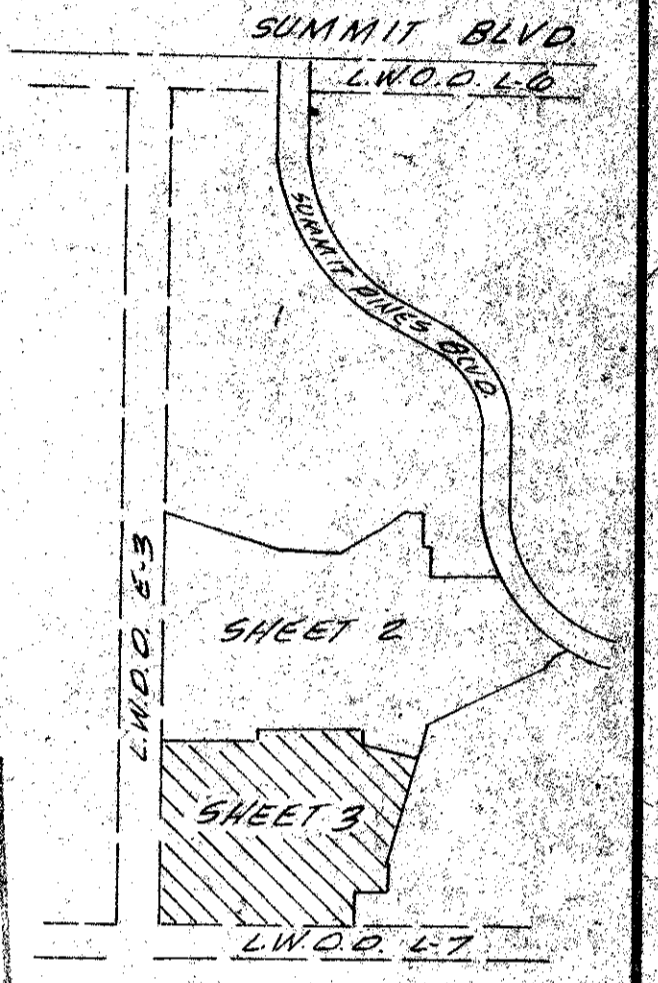
A P.U.D.
SECTION 11, TOWNSHIP 44 SOUTH, RANGE 42 EAST
PALM BEACH COUNTY, FLORIDA
SHEET 3 OF 3 SHEETS



175

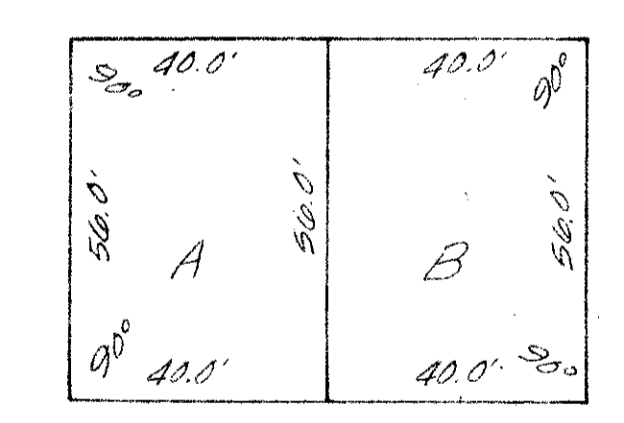


11/44/42
CORRECTION * Summit Pines
BOOK 52 PAGE 174
FLOOD ZONE B
C-10 * 32
TYP NAME Unit 2



CURVE DATA

| NO. | RADIUS | DELTA | TANGENT | ARC LENGTH |
|------|---------|-----------|---------|------------|
| C-16 | 302.33' | 10°02'56" | 26.58' | 53.02' |
| C-17 | 287.33' | 14°25'45" | 30.37' | 72.30' |
| C-18 | 272.33' | 8°37'40" | 20.54' | 41.01' |
| C-19 | 55.00' | 89°57'58" | 54.97' | 80.36' |
| C-20 | 48.00' | 89°57'58" | 39.98' | 62.81' |
| C-21 | 25.00' | 89°57'58" | 24.99' | 39.20' |
| C-22 | 25.00' | 90°02'02" | 25.01' | 39.28' |
| C-23 | 40.00' | 90°02'02" | 40.02' | 62.86' |
| C-24 | 55.00' | 90°02'02" | 55.03' | 86.43' |
| C-25 | 211.33' | 8°21'24" | 15.44' | 30.82' |
| C-26 | 196.33' | 14°25'45" | 24.85' | 49.44' |
| C-27 | 181.33' | 5°13'37" | 8.28' | 16.64' |
| C-28 | 320.13' | 14°25'45" | 40.52' | 80.02' |
| C-29 | 290.13' | 14°25'45" | 30.73' | 73.07' |
| C-30 | 120.00' | 30°00'00" | 32.15' | 62.83' |
| C-31 | 150.00' | 30°00'00" | 40.19' | 78.54' |
| C-32 | 180.00' | 30°00'00" | 48.23' | 94.25' |
| C-33 | 47.65' | 60°02'02" | 24.64' | 44.69' |
| C-34 | 47.65' | 60°02'02" | 33.31' | 64.41' |
| C-35 | 72.65' | 60°02'02" | 41.97' | 76.12' |
| C-36 | 495.47' | 3°34'35" | 15.47' | 30.93' |
| C-37 | 480.47' | 3°34'35" | 15.00' | 29.99' |
| C-38 | 465.47' | 3°34'35" | 14.53' | 29.05' |
| C-39 | 320.13' | 10°04'29" | 12.71' | 24.33' |
| C-40 | 320.13' | 10°04'29" | 28.22' | 50.29' |



TYPICAL LOT DETAIL
SCALE: 1" = 30'

NOTE:
"D.E." = DRAINAGE EASEMENT
"U.E." = UTILITY EASEMENT
ALL LOT TIES ARE 90° OFF REFERENCE LINES UNLESS SHOWN OTHERWISE.
ALL LOT TIES TO CURVES ARE RADIAL LINES UNLESS SHOWN OTHERWISE.

NOT PLATTED

52/175

0435-301

SUMMIT PINES UNIT 2

O'BRIEN, SUITER & O'BRIEN, INC.
ENGINEERS, SURVEYORS, LAND PLANNERS
2601 NORTH FEDERAL HIGHWAY, DELRAY BEACH, FLORIDA

| | |
|--------------------------------|-----------------|
| DATE: JULY 1985 | SCALE: 1" = 60' |
| FIELD BOOK: PAGE: SHEET 3 OF 3 | DESIGN: 84-7 |

GARDEN HILLS UNIT THREE

PLAT BOOK 46 PAGES 200-203